

ALGE SWIM2000

NEW TECHNOLOGY MAKES TIMING A PLEASURE!



Features of the ALGE SWIM2000 System:

- ☛ PC - based timing-system
- ☛ Easy to operate,
- ☛ **Meet-Manager Software** with **LENEX - data transfer** and integrated network capability
- ☛ Possibility to control up to 12 lanes
- ☛ **All lanes are controlled optically and accustically**
- ☛ Possibility to connect to each lane and each side: 1 touchpad, 3 manual push buttons and 1 relay-start-pad (**5 independent timing - channels per lane per side**)
- ☛ All lists can be published directly as html-files (for Internet-distribution)
- ☛ **Integrated backup battery** works for 4 hours (without computer)
- ☛ Integrated **speaker-system**
- ☛ Full duplex communication between starter and timekeeper is possible via headset
- ☛ **The most reliable and rugged touchpads on the market**
- ☛ Warnings for missed touch(es), exceeding time difference between manual button and touchpad, or exceeding lap difference
- ☛ On screen false-start warning

ALGE
TIMING

PC-SOFTWARE

The ALGE-PC-Software for SWIM 2000 consists of several separate programs. Because of this modular construction it is possible to have the timing on one PC, and do the meet management on another (or more).

Since the timing software and meet management software is made by the same company everything is 100% compatible. Although the meet management software is included in the SWIM 2000, we have interfaces to most common 3rd party meet management software. The SWIM 2000 software works with all Microsoft Windows versions (Windows 95, 98, ME, NT, 2000, XP).

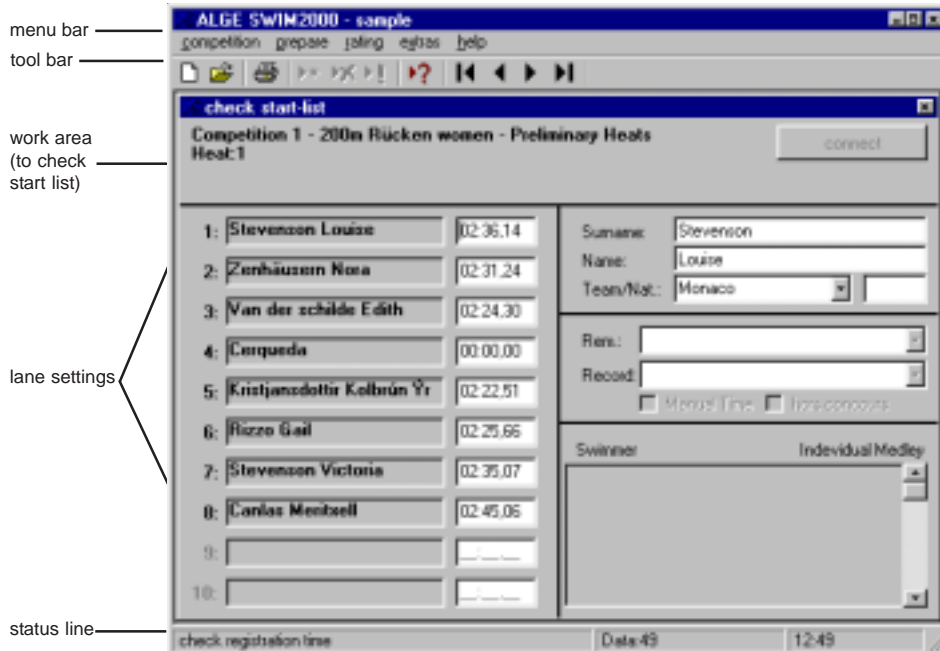
TIMING - PROGRAM



The timing software has clear, intuitive symbols. This makes operation very easy!

- ☞ optimized for the evaluation program
- ☞ visual interface
- ☞ ordered as you see the pool in front of you
- ☞ easy to operate
- ☞ 10 years free software update
- ☞ battery backup
- ☞ clear arranged event protocol
- ☞ possibility to operate up to 12 lanes
- ☞ competitor details also for the timekeeper
- ☞ lots of useful control functions

MEET-MANAGEMENT - PROGRAM



The ultimate solution. Timing system and Meet-Management Software is optimized to each other.

- ☞ start fee administration
- ☞ LENEX-data transfer
- ☞ registration overview
- ☞ registration lists
- ☞ relay registration
- ☞ overviews
- ☞ time schedule
- ☞ start lists
- ☞ statistics
- ☞ result lists
- ☞ fine calculations
- ☞ point lists
- ☞ LEN-point calculation
- ☞ possibility to publish all lists directly in the internet

LAYOUT-DESIGNER



Software that allows to design your personal layout for the result lists

- ☞ free shape of all lists
- ☞ use of all windows fonts
- ☞ insert of bitmaps

ALGE SWIM 2000 Components



SWIM CONTROLLER SWC

The high-tech device SWC is collecting and storing all data Flash-Rom, galvanic separated interfaces, accoustic part and synchronous input-output.



TOUCHPAD TP18/24

The touchpad is one of the key components of a timing system. The quality of this component is relevant for the success of the complete system. The closed construction of the touchpad (backside of stainless steel 1.4571) is relevant for reliability. The touchpads are in different dimensions available:

TP 24: active area 2444 x 906 x 10 mm

TP 18: active area 1855 x 906 x 10 mm

For other sizes please contact your ALGE dealer

SWIM TERMINAL SWT

The Terminals are connected with only one cable from terminal to terminal. At the last terminal you have to connect a SWT-END. All terminals are identical. No numbering!! Each SWT includes jacks for 1 touchpad, up to 3 separate push-button 023-02 and one Start Block SO 2 or SWR 2.



PUSH-BUTTON 023-02

waterproof rugged construction, cable length 2 m



START UNIT SU

with integrated microphone and start push button



SWR 2 RELAY START PAD

The best solution for existing starting blocks. Different size and design on request.

SPA and SPP

Built-in gel-cell-battery and amplifier. Each SPA can drive one SPP.



Display Board GAZ4

In the focus of the event. Available in different sizes with 15, 25, and 45 cm (5.9, 9.8, and 17,7 inch) figure-height. Other display boards on request



START BLOCK SO 2

modern design made of stainless steel (1.4571). Different size and design on request.

Technical data

SWIM Controller SWC:

Measuring Range: 23 hours, 59 minutes, 59,9999 seconds

Time Reference: TCXO 10.000MHz (temperature compensated quartz oscillator)

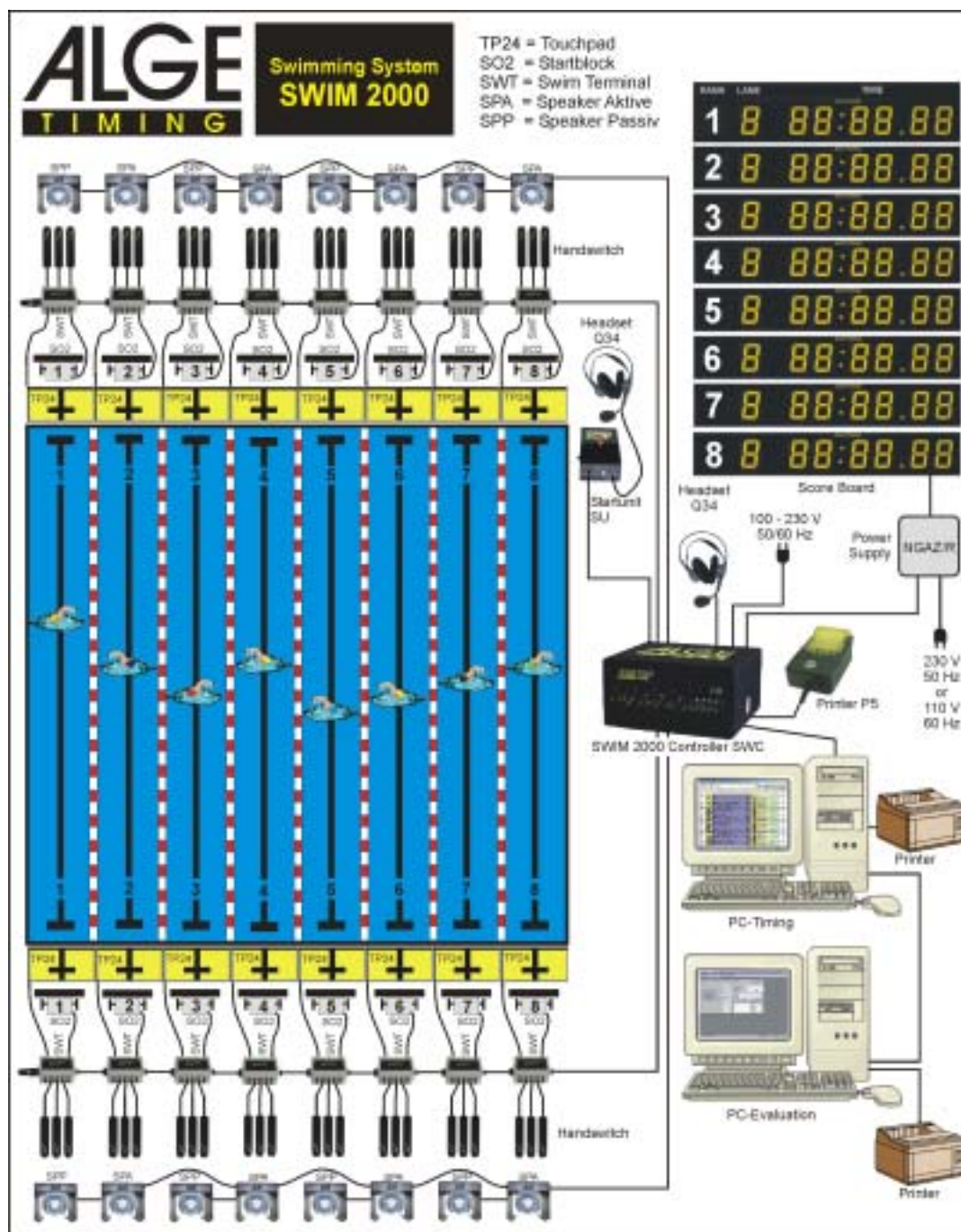
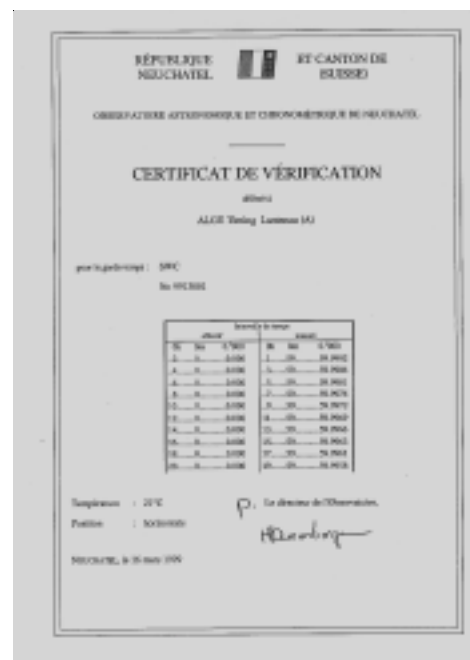
Frequency Deviation: temperature range -25 to 50°C (-13 to 122°F): +/- 2,5ppm (+/- 0,009 sec./h.)
with aging: +/- 1 ppm per year
at 25°C (77°F) adjusted to +/- 0.1 ppm

Power Supply: internal: 12V gel cell battery
external: 100-240 V 50/60Hz or 12-18 V DC

Interfaces: 4 complete RS232 interfaces (no Parity, 8 data, 1 stop)
1 x PC (9600 kBAud)
1 x display board (2400 kBAud) galvanic separated
1 x protocol printer (2400 kBAud)
1 x video interface (9600 kBAud) galvanic separated
3 RS485 interfaces
2 x timing bus start side and turn side
1 x display board

Connections: SWT line start SWT line turn
 printer 1 printer 2
 PC TV-Online
 display board SU SWIM Start Unit
 start (banana plugs) display board (banana plugs)
 2 x Speaker active headset
 audio line In audio Line out

Regulators: microphone headset
 audio in total volume



ALGE

TIMING

Split Second Timing Pty Ltd
PO Box 1322
Dee Why, NSW 2099
Telephone: +61-(0)2-9981 6069
Fax: +61-(0)2-9981 6070
e-Mail: sales@splitsecond.com.au
Internet: www.splitsecond.com.au